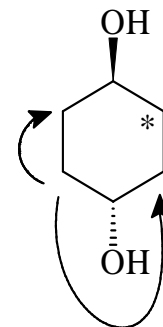
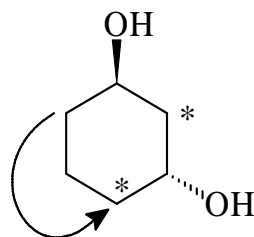
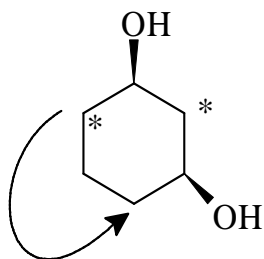
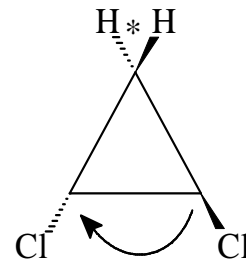
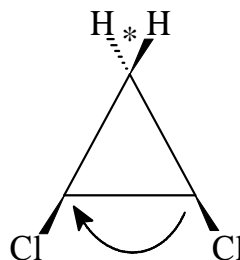
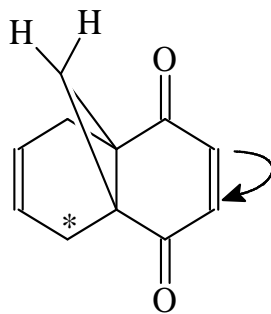
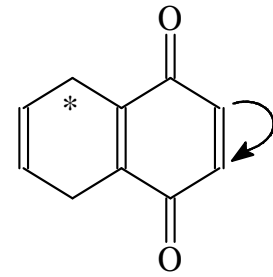
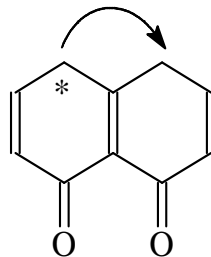
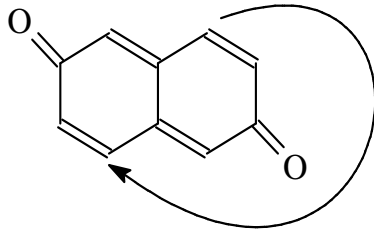
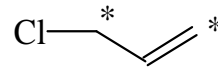
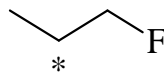
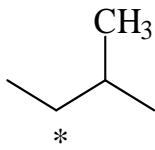


U14

homotop -
enantiotop -
diastereotop -

Rotation
Spiegelebene
nichts, chirales Zentrum



1. Bestimmen Sie, ob die 2 Protonen der markierten Methylene-Gruppen (*) homotop, enantiotop oder diastereotop sind.
2. Bestimmen Sie, ob die markierten Gruppen (Pfeile) homotop, enantiotop oder diastereotop sind.
3. Wieviele Signale erwarten Sie im ^1H -Spektrum?
4. Bestimmen Sie das Spinsystem.
5. Geben Sie je ein Beispiele für ein AB, AB₂, ABC, ABCDE und AA'BB'-System an.