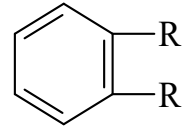
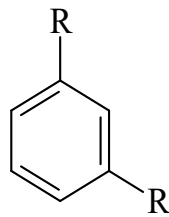
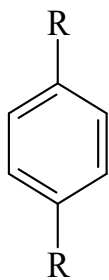


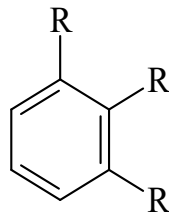
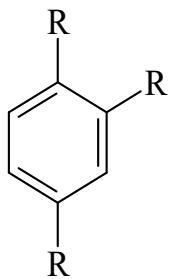
U7

- a) Wieviele Signale erhalten Sie im ^1H bzw. ^{13}C -Spektrum?
 b) Geben Sie das Aufspaltungsmuster der Protonen an.



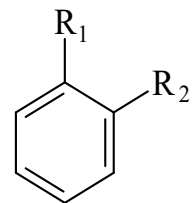
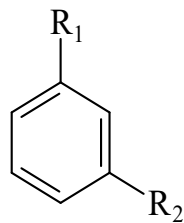
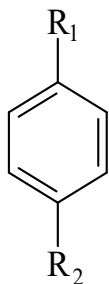
^1H -Signale

^{13}C -Signale



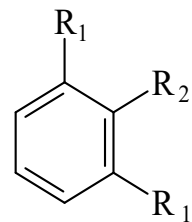
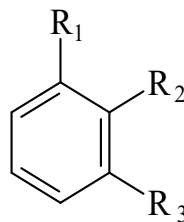
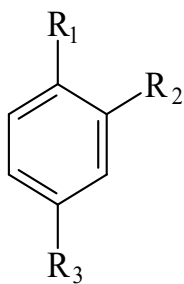
^1H -Signale

^{13}C -Signale



^1H -Signale

^{13}C -Signale



^1H -Signale

^{13}C -Signal

Wie sind die Aromaten in folgenden Spektren substituiert?

U7/2

