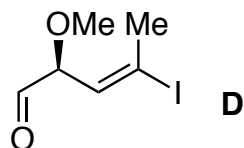
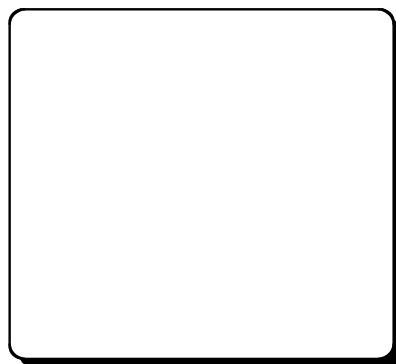


1.  $I_2$
2.  $NaIO_4$  on silica gel

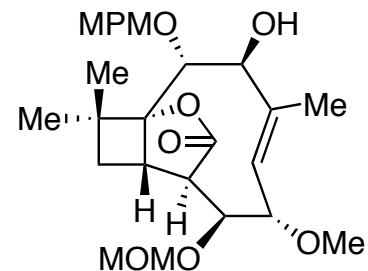


**C** + **D**

$NaHMDS$



1. MOMCl,  $i\text{-Pr}_2\text{NEt}$
2. TBAF
3. DMP
4.  $CrCl_2$ ,  $NiCl_2$

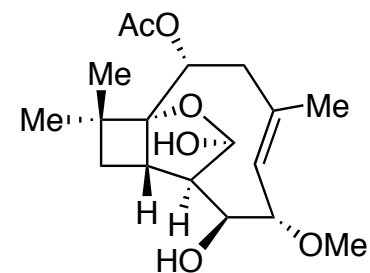


**E**

1.  $Ms_2O$ , DMAP, pyr.
2. 4 M aq. HCl
3. TESOTf, pyr.
4. DDQ
5.  $Pd_2(dba)_3$ ,  $n\text{-Bu}_3P$ ,  $NaBH_4$



1. Dibal-H
2.  $Ac_2O$
3.  $AcOH/H_2O/THF$



**(-)-Pestalotiopsin A**